

FLAP BRUSH

FINTECH engineers flapbrushes made of non-woven abrasive material. Flapbrushes are your best choice for a satin finish on both ferrous and non-ferrous metals. These flapbrushes work especially well on stainless steel and aluminum.

These wheels are made out of various grades of non-woven material that provides a random finish from a dull fine to a bright satin.

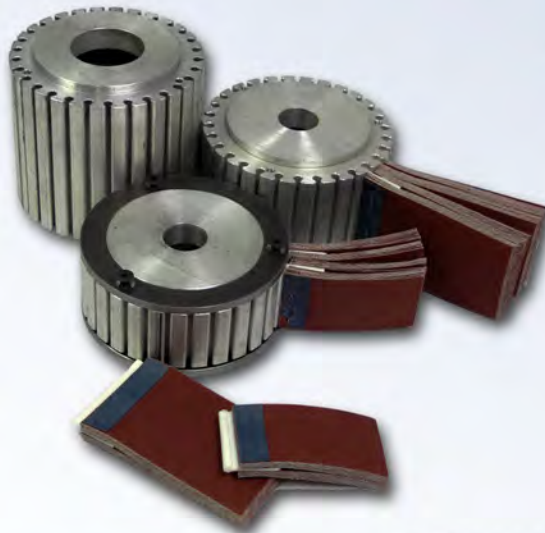
Both Flap Brush and Interleaf wheels are available in 14" and 16" diameter in widths from 1" to 4".



INTERLEAF

A combination of coated and non-woven abrasives, these interleaf wheels are the perfect middle ground. Interleaf wheels have the cutting ability beyond that of a flapbrush, but with more forgiveness than the all-coated flapwheels.

These wheels can be engineered with various grades of non-wovens and cloth backed abrasives. Depending on the ratio of materials used the finish can vary from a random scratch pattern to a longer scratch pattern to meet your desired finish.



Reducers also available

RELOADABLES

Our reloadable flapwheels are available with a reusable hub and replacement segments from grits 50 to 800.

These wheels can be used for blending out parting lines, leaving a brush like finish on stainless and finishing all types of metals.

The hubs vary in width from 2" to 6" with the diameter of the loaded wheel at 14" or 16".